

POST 2002 FLOOD:

**ARMY CORPS OF ENGINEERS
ACTIVITIES**


PLUS:

- Models and topo surveys
- Watershed district PTs and TACs
- RRBFDR Work Group & TSAC
- RRBI Mgt Board and TAG advisory groups
- RRBC + inventory teams/advisory groups
- RRBDIN
- Regulatory permits

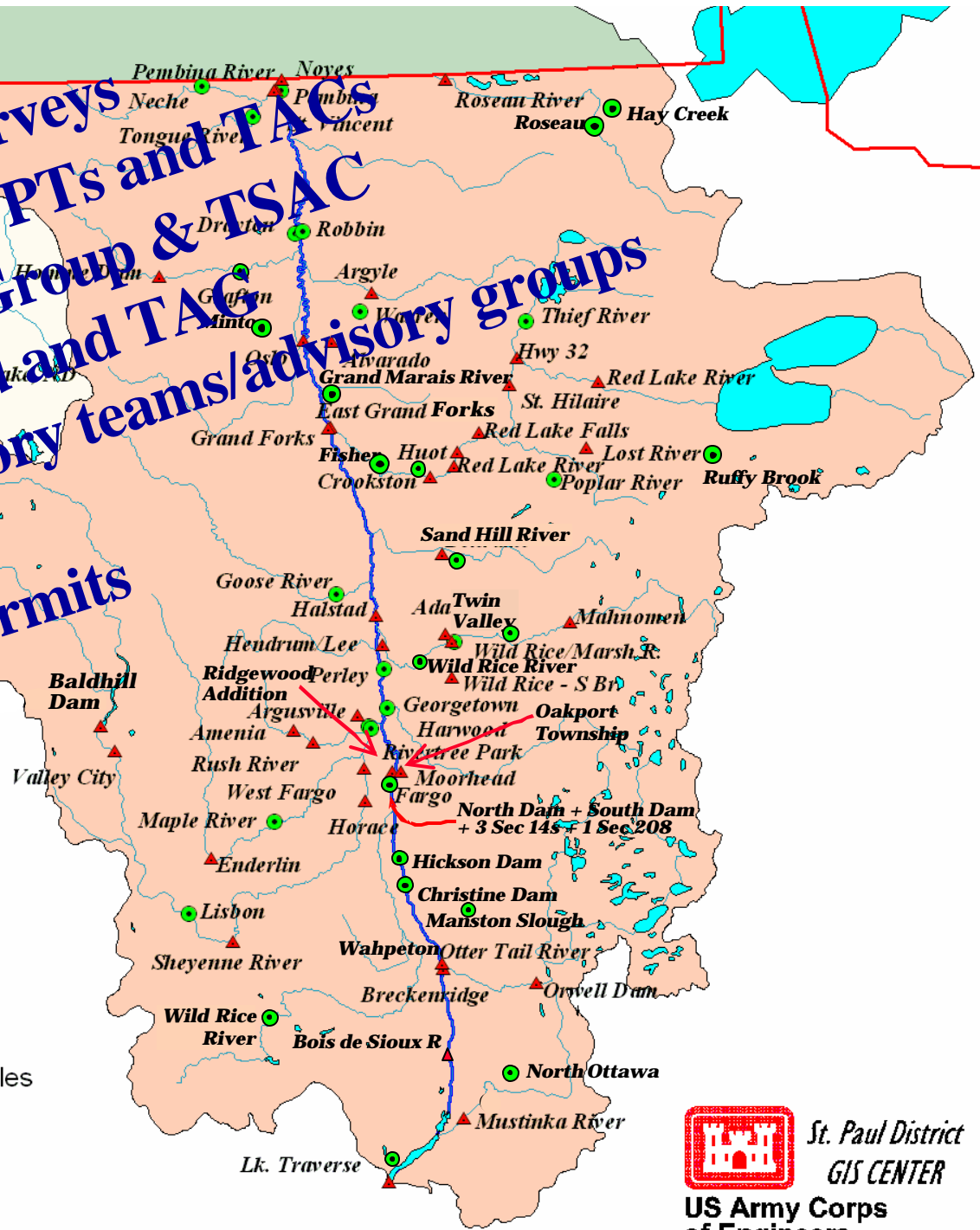
U.S. Army Corps of Engineers

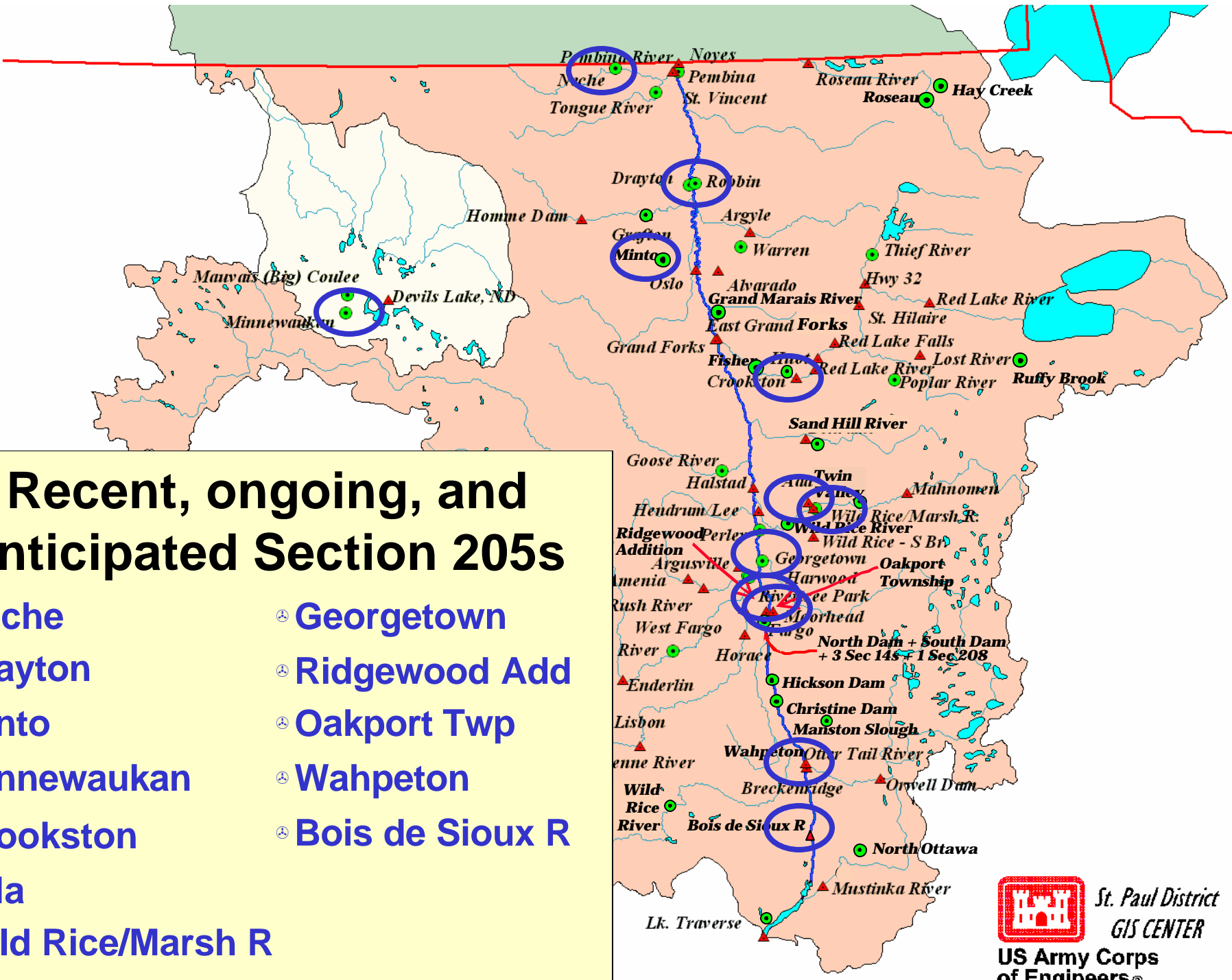
Red River Basin

 Projects/Studies

 Studies

40 0 40 80 Miles



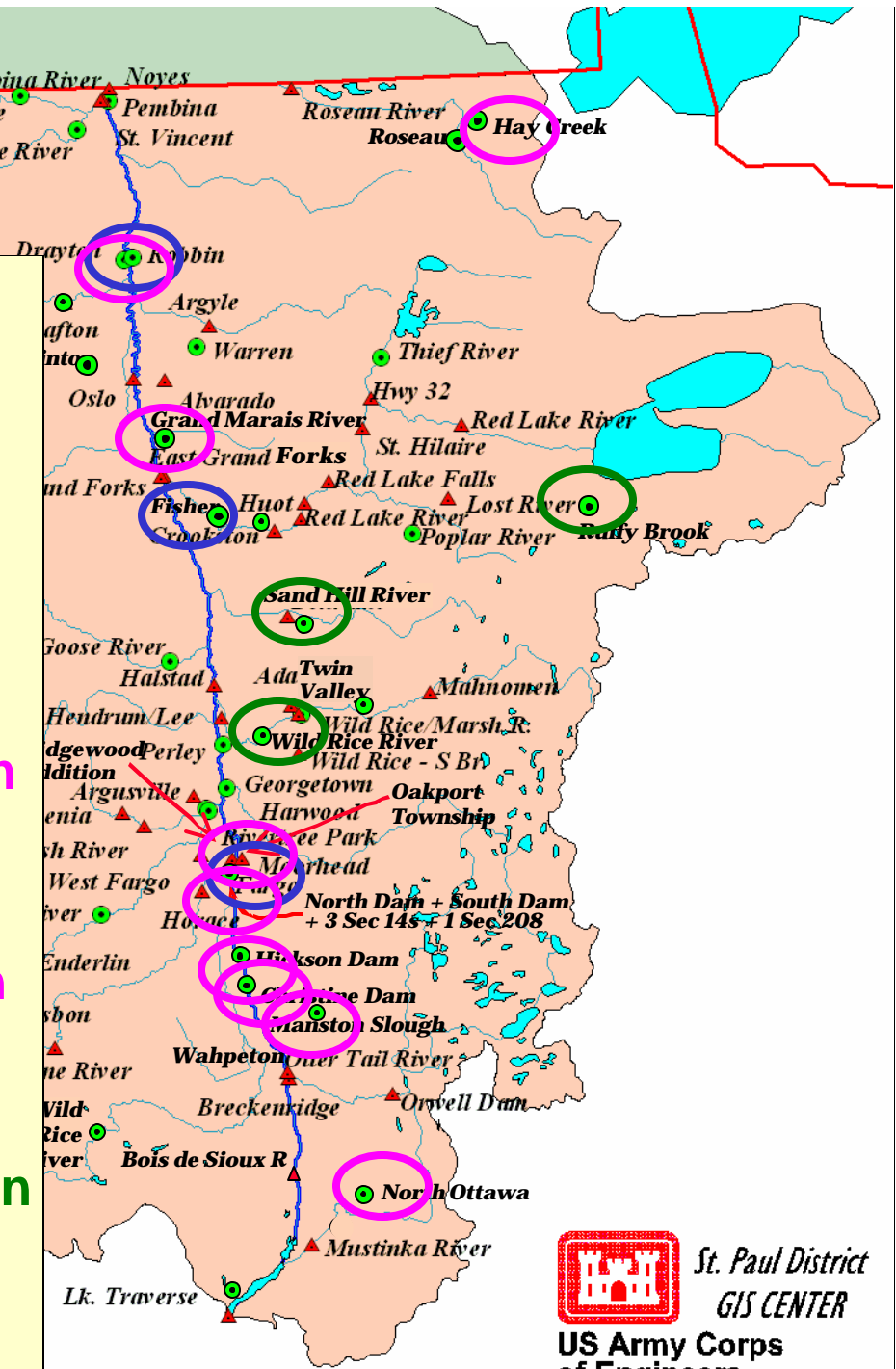


Recent, ongoing, and anticipated Section 205s

- ⊕ Necho
- ⊕ Drayton
- ⊕ Minto
- ⊕ Minnewaukan
- ⊕ Crookston
- ⊕ Ada
- ⊕ Wild Rice/Marsh R
- ⊕ Georgetown
- ⊕ Ridgewood Add
- ⊕ Oakport Twp
- ⊕ Wahpeton
- ⊕ Bois de Sioux R

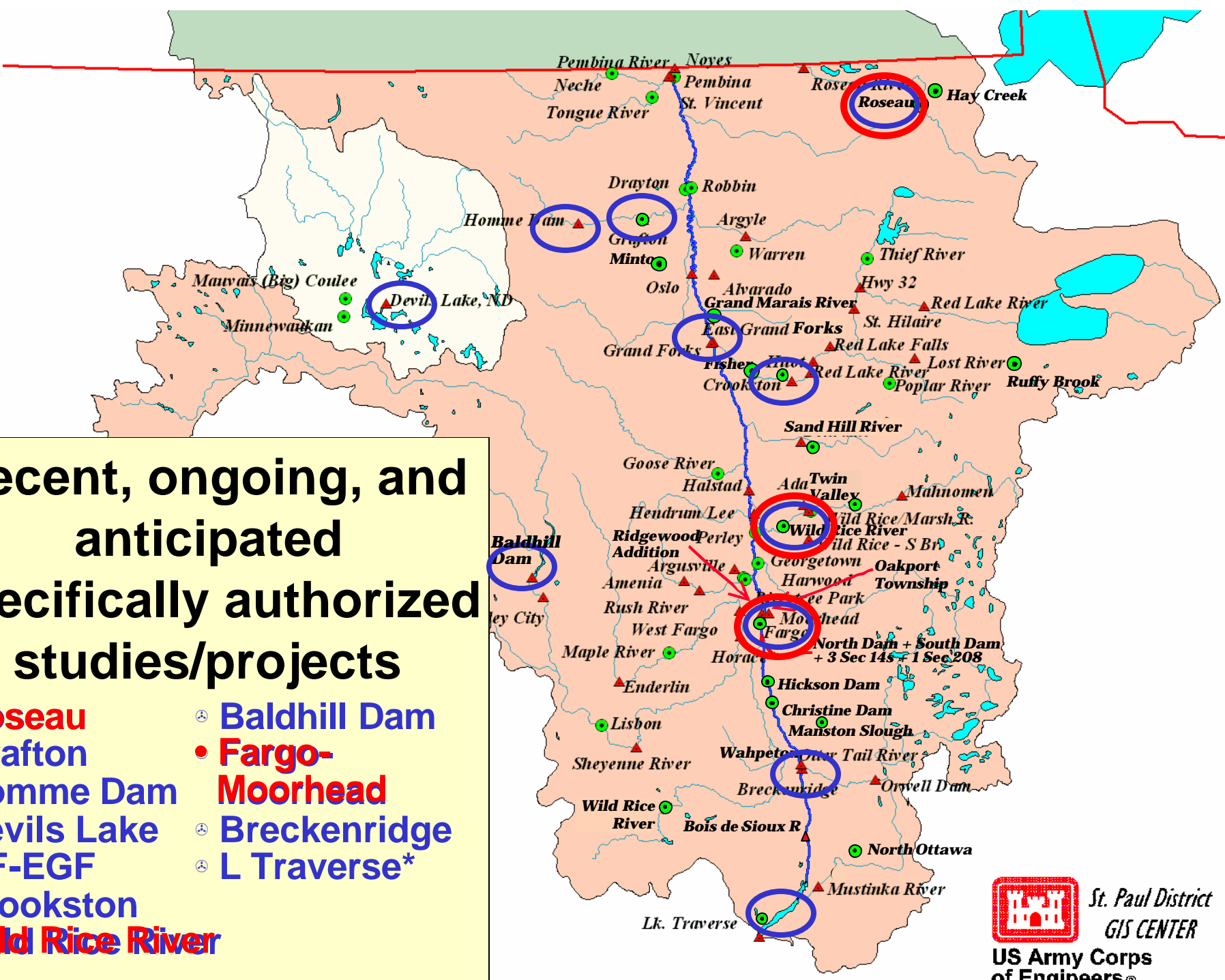
Recent, ongoing, and anticipated Section 14s, 206s, 1135s

- Section 14 – Streambank protection
 - Drayton
 - Fisher
- Section 206 – Ecosystem restoration
 - Hay Creek
 - Grand Marais
 - North Dam
 - South Dam
- Section 1135 – Ecosystem restoration
 - Ruffy Brook
 - Sand Hill River



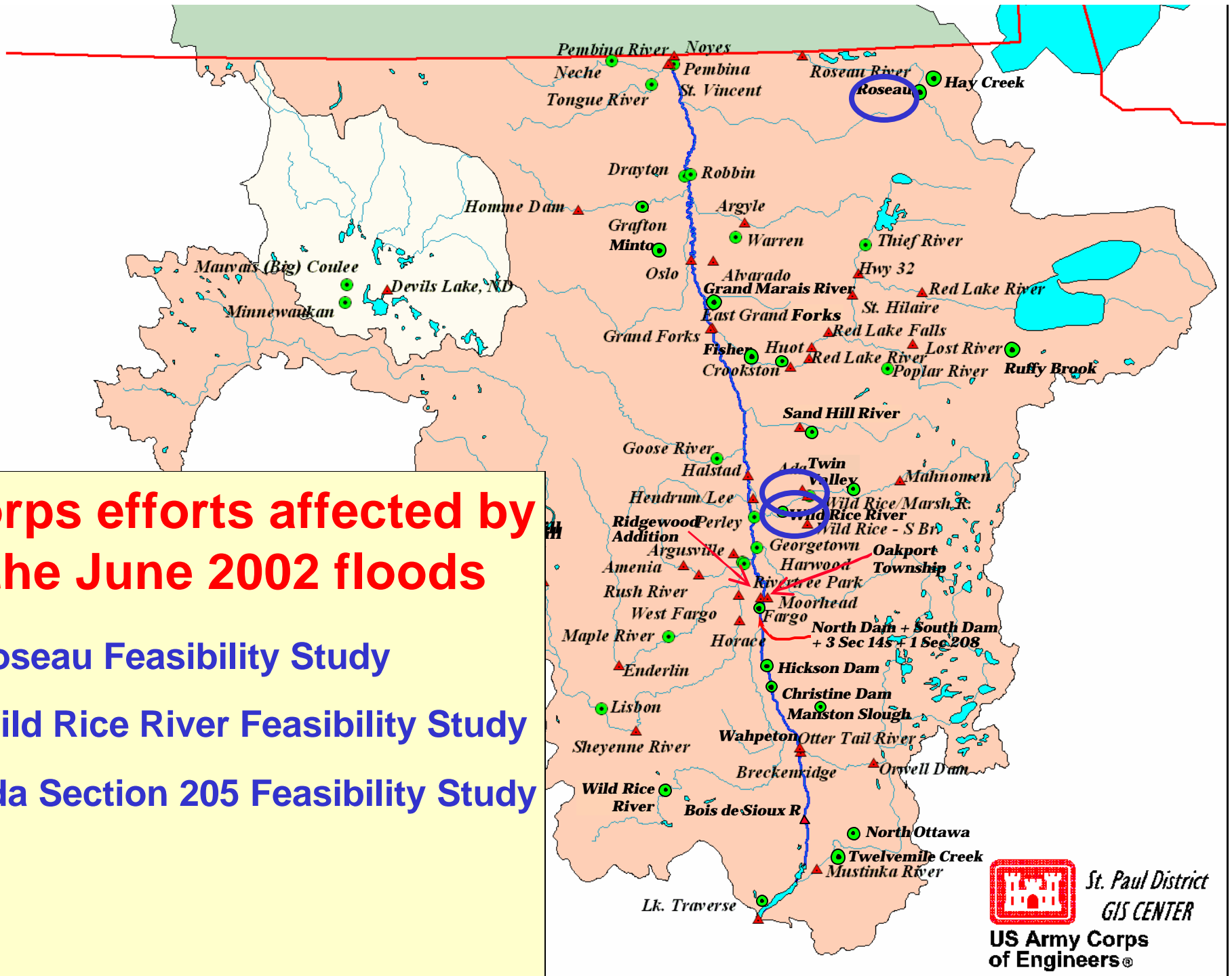
Recent, ongoing, and anticipated specifically authorized studies/projects

- **Roseau**
- ⊙ **Grafton**
- ⊙ **Homme Dam**
- ⊙ **Devils Lake**
- ⊙ **GF-EGF**
- ⊙ **Crookston**
- **Wild Rice River**
- ⊙ **Baldhill Dam**
- **Fargo-Moorhead**
- ⊙ **Breckenridge**
- ⊙ **L Traverse***



Corps efforts affected by the June 2002 floods

- ⊕ Roseau Feasibility Study
- ⊕ Wild Rice River Feasibility Study
- ⊕ Ada Section 205 Feasibility Study

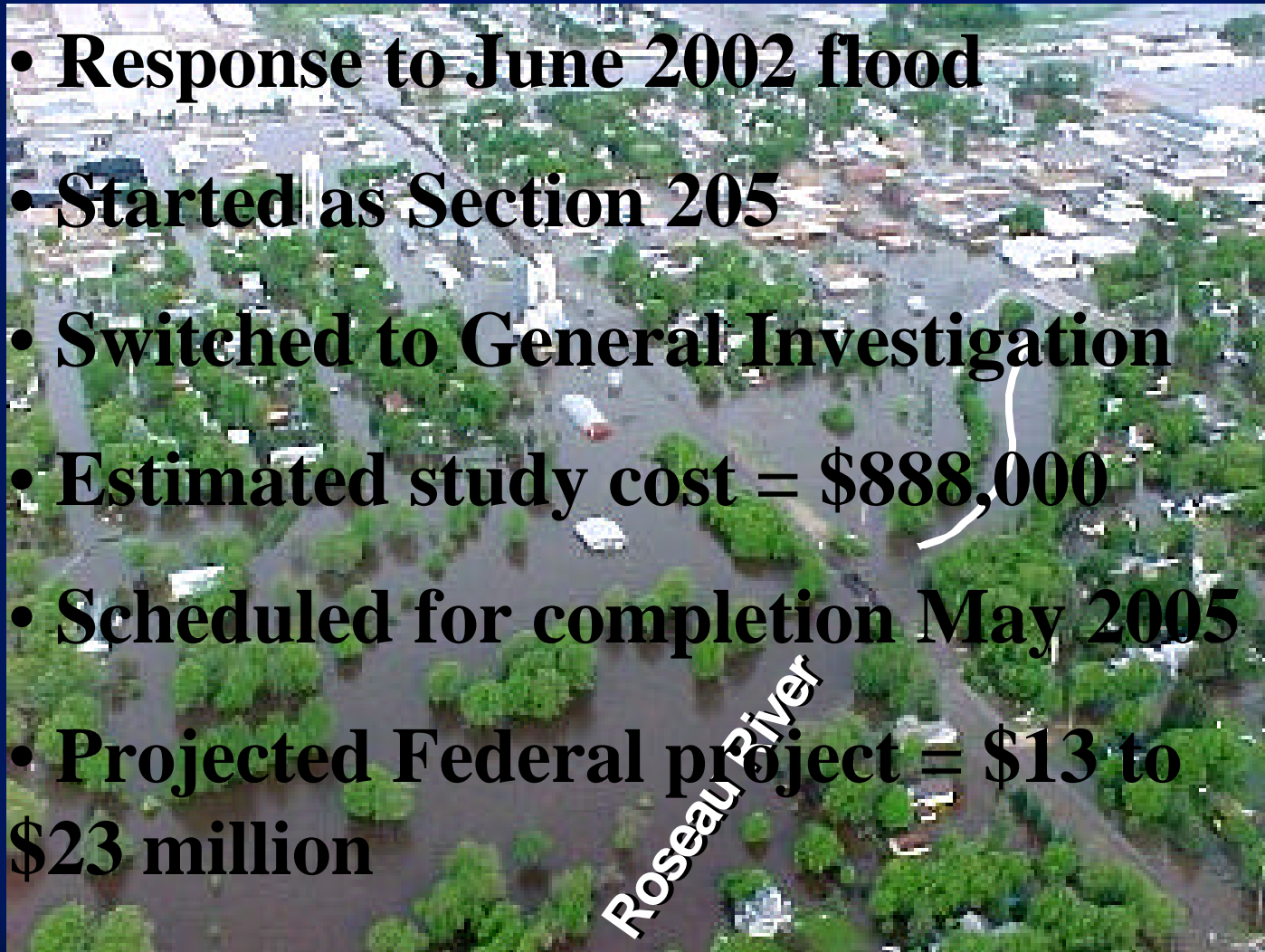


St. Paul District
GIS CENTER

US Army Corps
of Engineers®

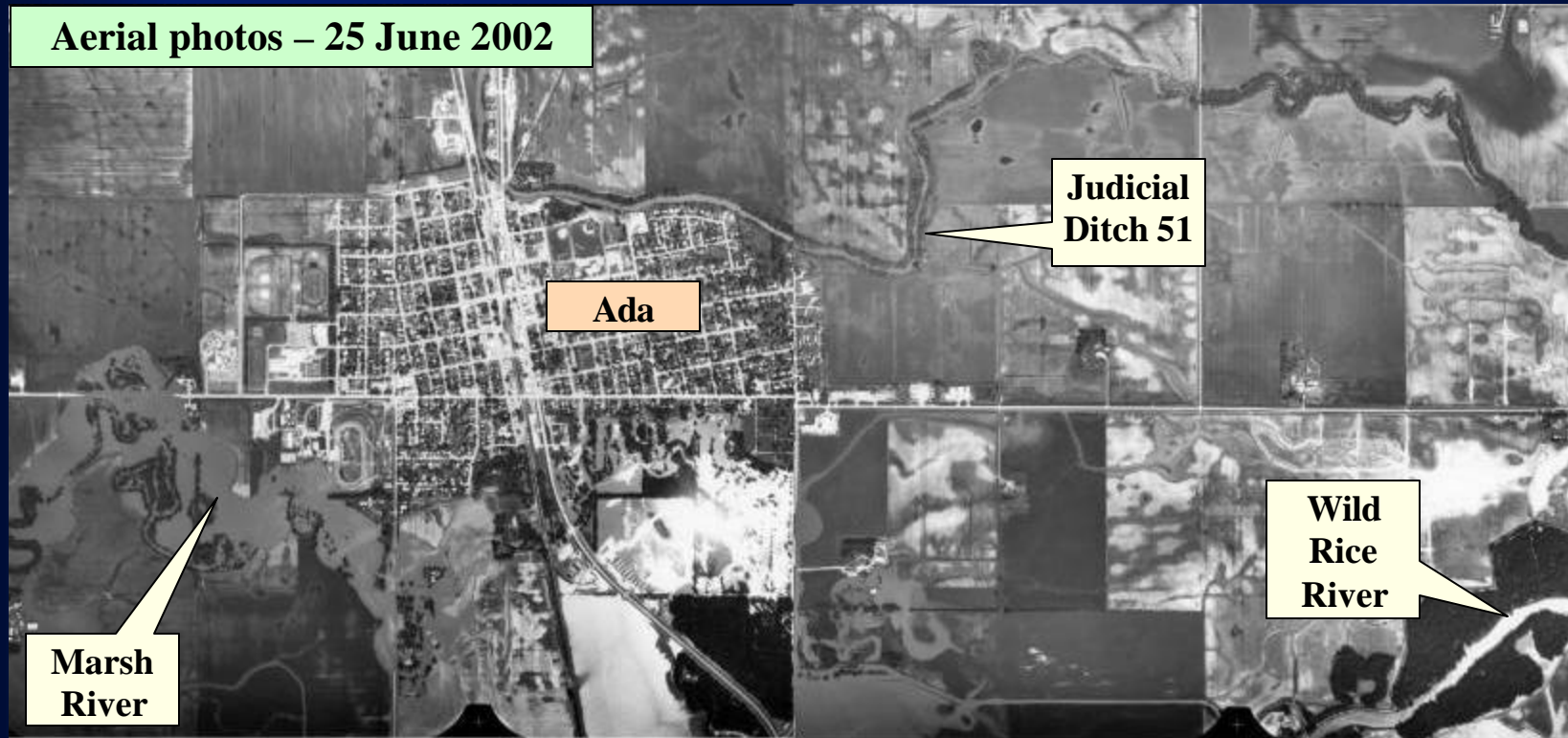
ROSEAU FEASIBILITY STUDY

- **Response to June 2002 flood**
- **Started as Section 205**
- **Switched to General Investigation**
- **Estimated study cost = \$888,000**
- **Scheduled for completion May 2005**
- **Projected Federal project = \$13 to \$23 million**



ADA 205 FEASIBILITY STUDY

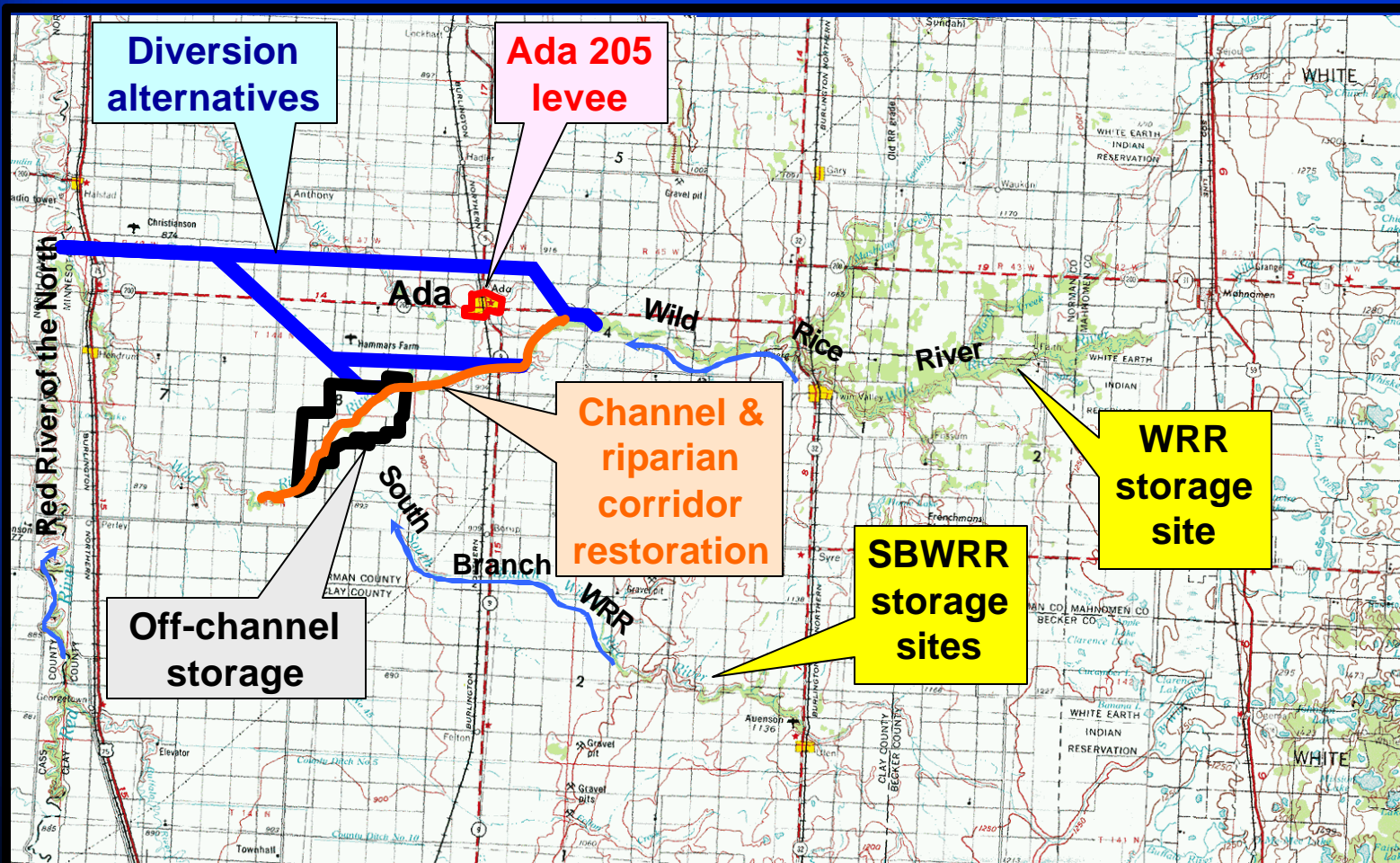
Aerial photos – 25 June 2002



Levee benefit/cost ratio:

- **Pre-2002 flood = 0.33**
- **Post-2002 flood > 2**

WILD RICE RIVER FEASIBILITY STUDY



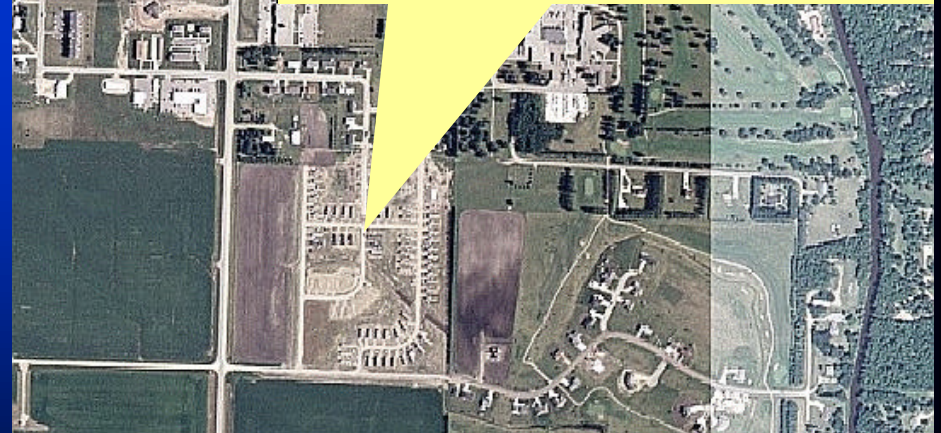
OTHER CORPS EFFORTS

During 2002 flood

City of Roseau

1 year after 2002 flood

Roseau temporary housing & trailer park

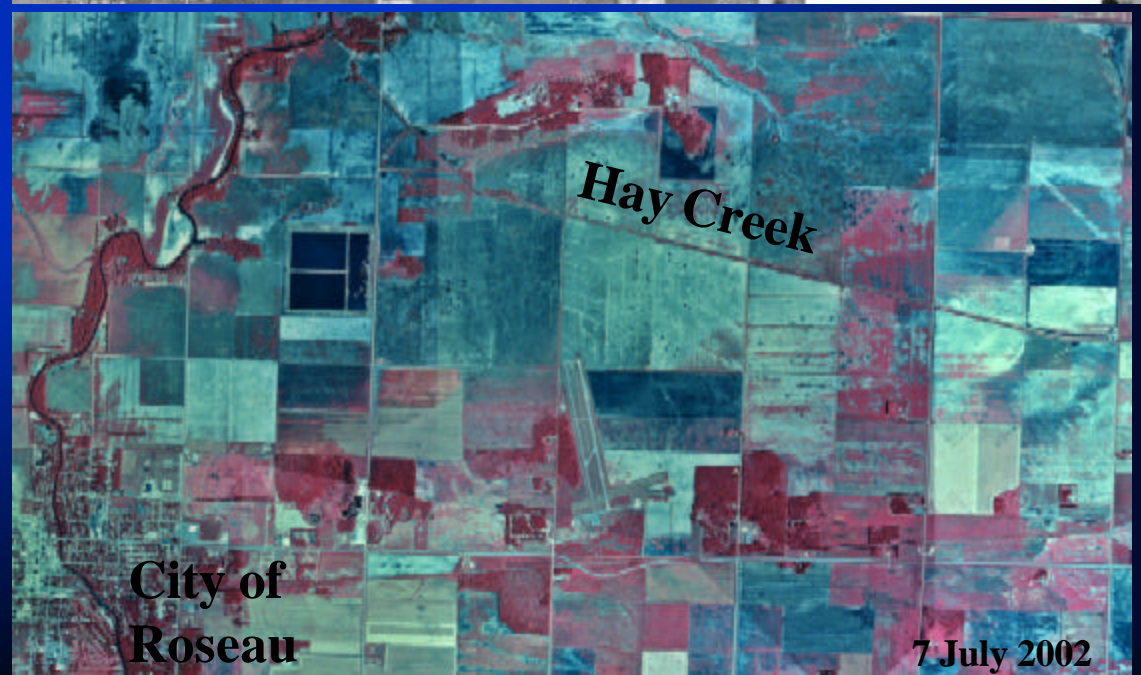


ROSEAU RIVER AND WILD RICE RIVER

**Aerial photos
during the June
2002 flood**

+

**Post-flood
infrared aerial
photos**



2002 FLOOD DAMAGE ASSESSMENT

- **Becker County**
- **Beltrami County**
- **Clay County**
- **Lake of the Woods
County**
- **Mahnomen County**
- **Norman County**
- **Roseau County**
- **Clearwater County**
- **Kittson County**
- **Marshall County**



U.S. Army Corps
of Engineers
St. Paul District

Northwest Minnesota

2002 Flood Damage Assessment



April 2003

SUMMARY

- **Corps activities related to or affected by the June 2002 flood:**
 - **Roseau Feasibility Study**
 - **Ada 205 Study**
 - **Wild Rice River Feasibility Study**
 - **Roseau temporary housing**
 - **Roseau River and Wild Rice River aerial photos**
 - **Flood Damage Assessment Report**
- **Questions? Contact Tom Raster 651-290-5238**
/ thomas.e.raster@usace.army.mil