



Manitoba Conservation
Districts Association

Enhancing The Environment For
Future Generations



Presentation to the Red River Basin Conservation Symposium

January 23, 2008
Fargo, North Dakota

History of the Conservation Districts Movement in Manitoba

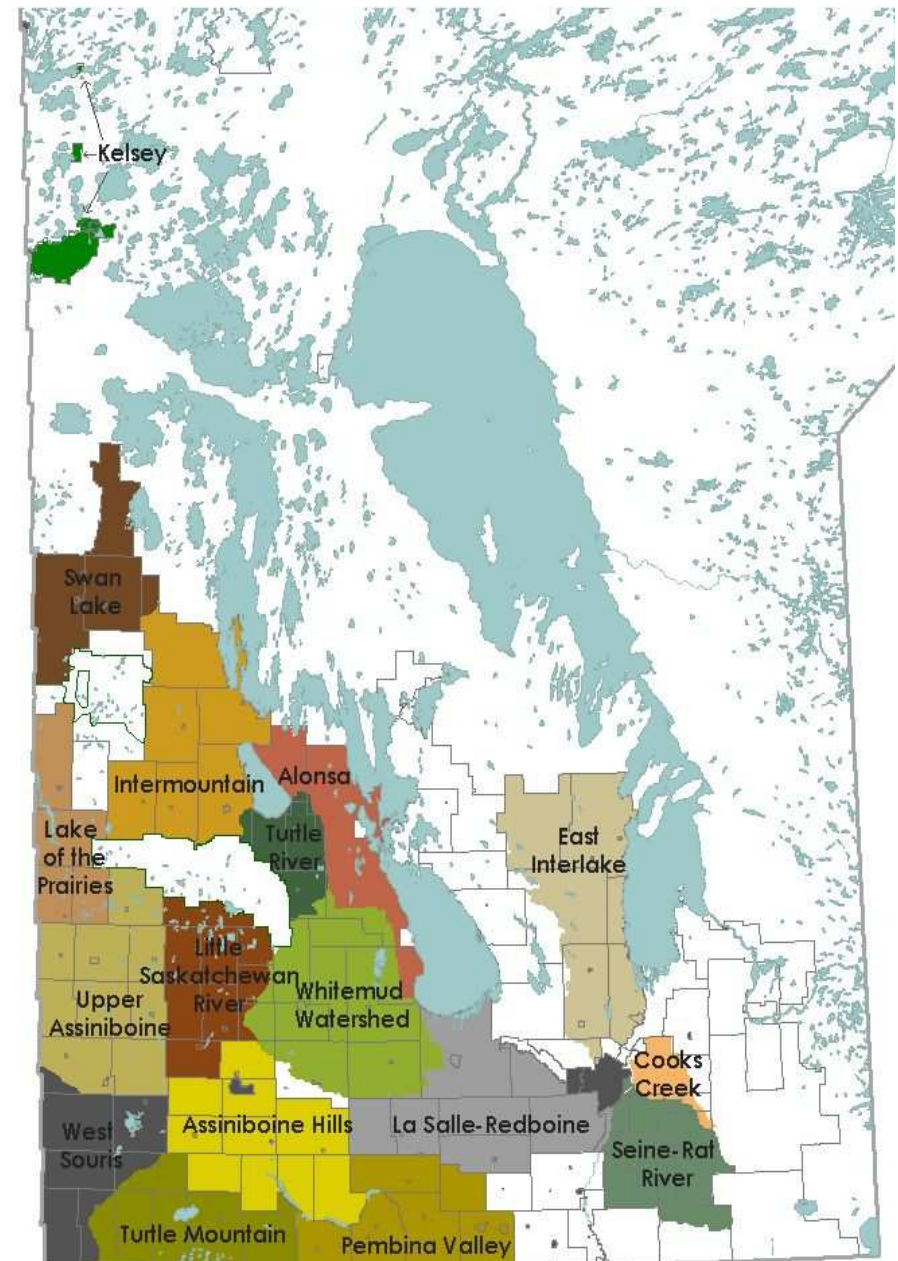
- First CD established in 1972
- Flooding, soil erosion, uncoordinated drainage spurred concept
- Based on Ontario watershed model
- 4 CD's – responsible for provincial waterway system and crossings – Drainage mandate
- Recent CD's - No assumed responsibility for provincial infrastructure – Watershed mandate
- Program control handed to local CD's in 1985

CD's Today

- 17 Conservation Districts
- Involves 136 Rural & Urban Municipalities
 - 94 Rural Municipalities
 - 3 Cities
 - 24 Towns & 15 Villages
- Population of 253,000 residents

Conservation Districts of Manitoba

December 2007



Benefits

- **Watershed Management**
 - Upstream connected to downstream
 - Urban & Rural
 - Everyone affects the watershed
 - Incentive based programming
 - Facilitates communication between governments
 - **Locally accountable boards**
 - Local decision making
 - Community priority based

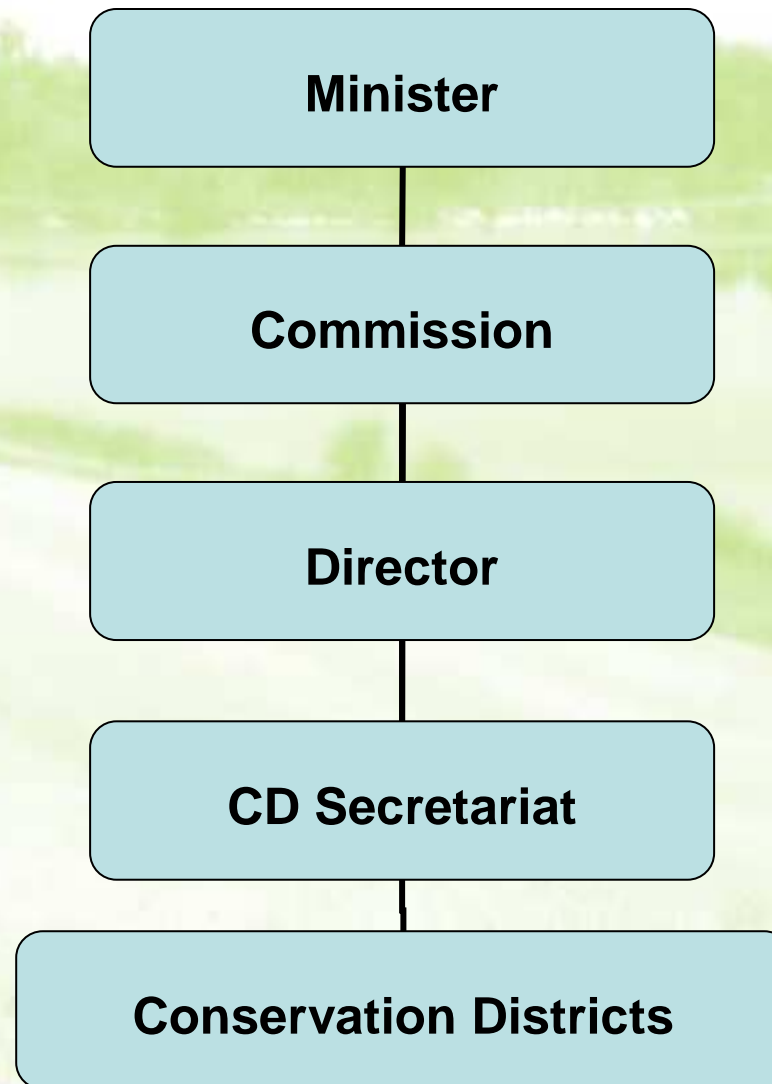
The Conservation Districts Act

- Establishes the framework for Conservation Districts including:
 - Board composition and governance
 - Jurisdiction and exclusions from CD
 - Establishes ability for CD's to organize and implement a scheme in respect to the District

The Water Protection Act

- Passed as legislation in 2006
- Establishes watershed planning as a means to protect water quality for all Manitoban's
- Provides the means for a CD to be established as Water Planning Authorities for individual watersheds.

CD Program Hierarchy



CD Commission & Secretariat

- Oversee CD Program – advises Minister
- Provides policy, administrative and operational guidance to the CD's
- Reviews long term plans, annual operations and budgets of the CD's
- Recommends provincial funding
- Ensure CD's consider/follow Manitoba Water & Land Use Policies

Structure of Conservation Districts

- Sub-districts within a Conservation District (ideally based on a watershed)
- Each RM has one appointed councilor and all others are appointed ratepayers for each sub-district.
- Main CD board is comprised of the elected chairperson from each sub-district.

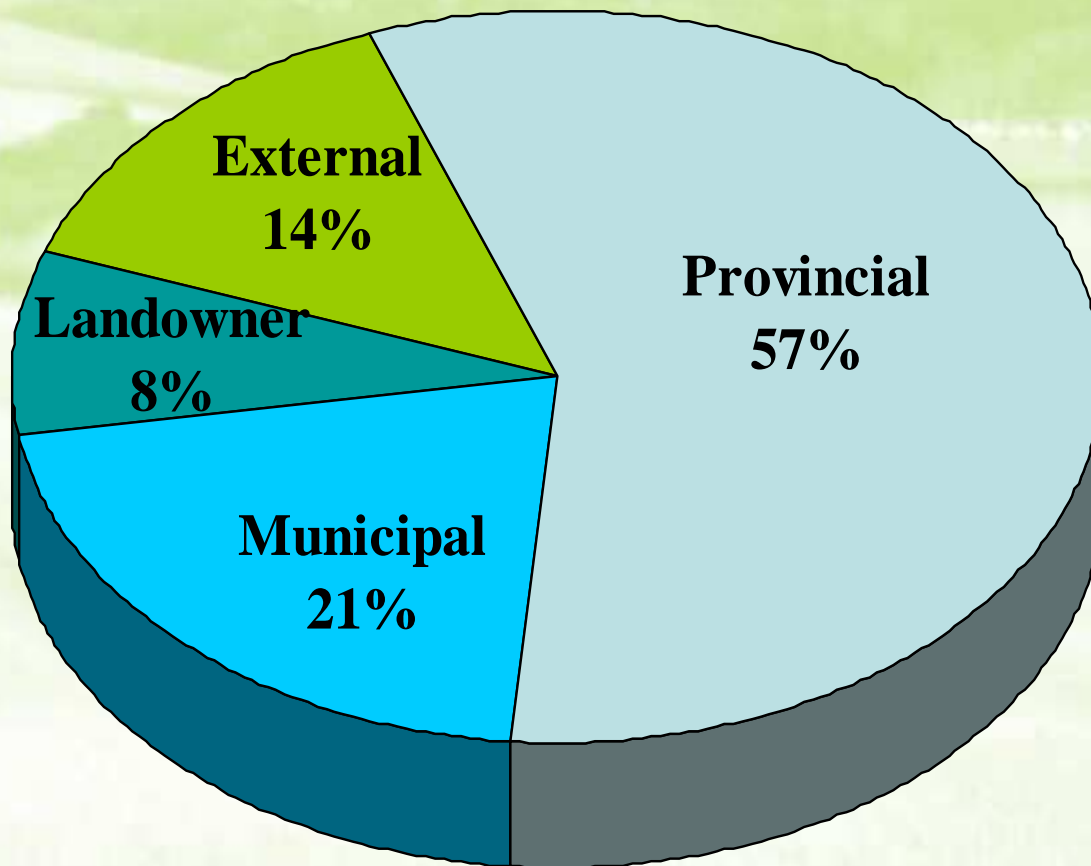
Conservation District Staff

- Typically comprised of:
 - Manager
 - Administrator
 - Field Technician
 - Seasonal Field Staff

Manitoba Conservation Districts Association

- Represents CD's in Manitoba at local level and provincial level,
- Aids in funding procurement for CDs
- Lobbies the Conservation District Commission on behalf of CDs for funding

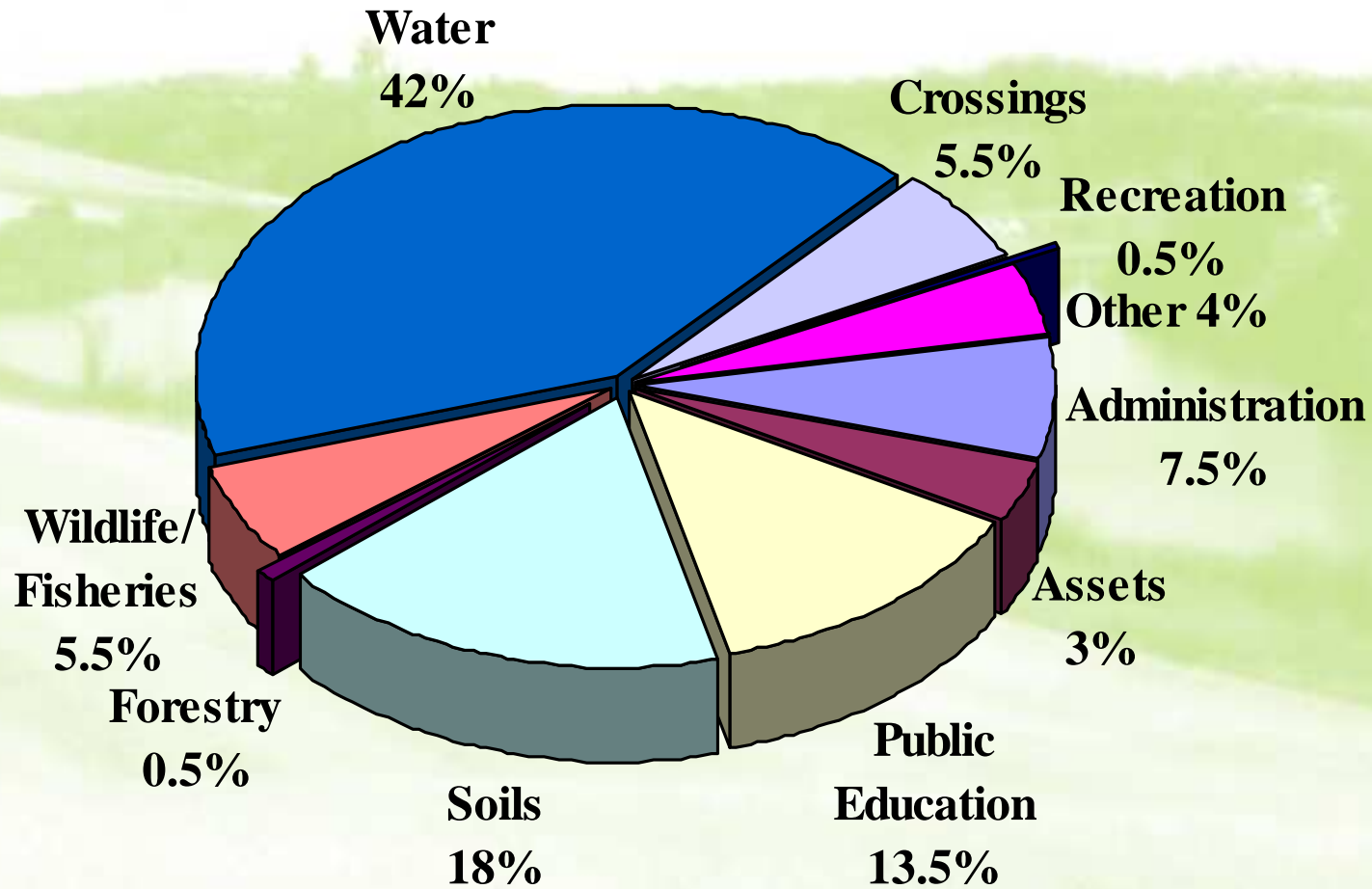
Current CD program funding



Program Total
~ 7 Million

| Total Funding (M) | |
|-------------------|-----|
| Provincial | 4.2 |
| Municipal | 1.5 |
| External | 1.5 |

Where is the money spent?



CD Programs

- Water Management Programs
 - Drainage management
 - Water storage
 - Abandoned Well Sealing
 - Water Quality Testing and Protection
- Soil Management Programs
 - Erosion Control, Streambank Rehab.
 - Pasture Management
 - Shelterbelt Planting, Bufferstrips

CD Programs

- Public Education Programs
 - Tours, Workshops and Demonstrations
 - School programs, Interpretive Parks and Trails
- Wildlife/Fisheries/Habitat/Forestry Programs
 - Woodlot Management, Habitat protection
 - Fisheries Restoration Projects, Hatchery Support, Block Tree Plantings

Partnerships

- Federal Partners
 - Agriculture and Agri-food Canada, Environment Canada, NRCan, Fisheries and Oceans, Sustainable Communities Initiative
- Provincial Partners
 - Manitoba Ag and Food, Water Stewardship, Fisheries Enhancement Initiative, SDIF, Water Stewardship Fund, MB Hydro, Water Services Board, Hometown Green Team

Partnerships

- Non Government Agencies
 - Delta Waterfowl, Ducks Unlimited, Universities and Colleges of Manitoba, Manitoba Habitat Heritage Corporation, Keystone Agricultural Producers

Water Retention











A blurred landscape photograph showing rolling hills and a road, overlaid with a green tint. The text "Questions?" is centered in a white box.

Questions?