

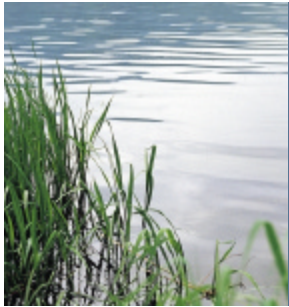


# Clean Water Legacy

## Impaired Waters and TMDLs

Gaylen Reetz

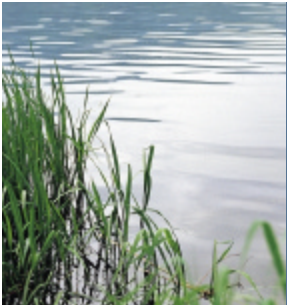
Minnesota Pollution Control Agency



# Legal Authority for Impaired Waters Program

**Federal Clean Water Act (CWA) of 1972** – framework for protecting and restoring water quality nationwide

**Focus: Section 303** – establishes national water quality standards and (TMDL) requirements



# What does Section 303(d) require?

Minnesota Pollution Control Agency

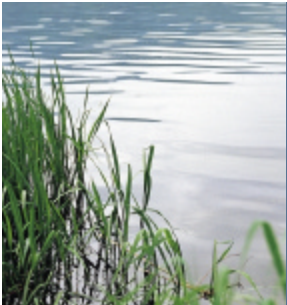
MPCA must analyze monitoring data for water bodies across Minnesota



Data is compared to water quality criteria to determine whether standards are being met

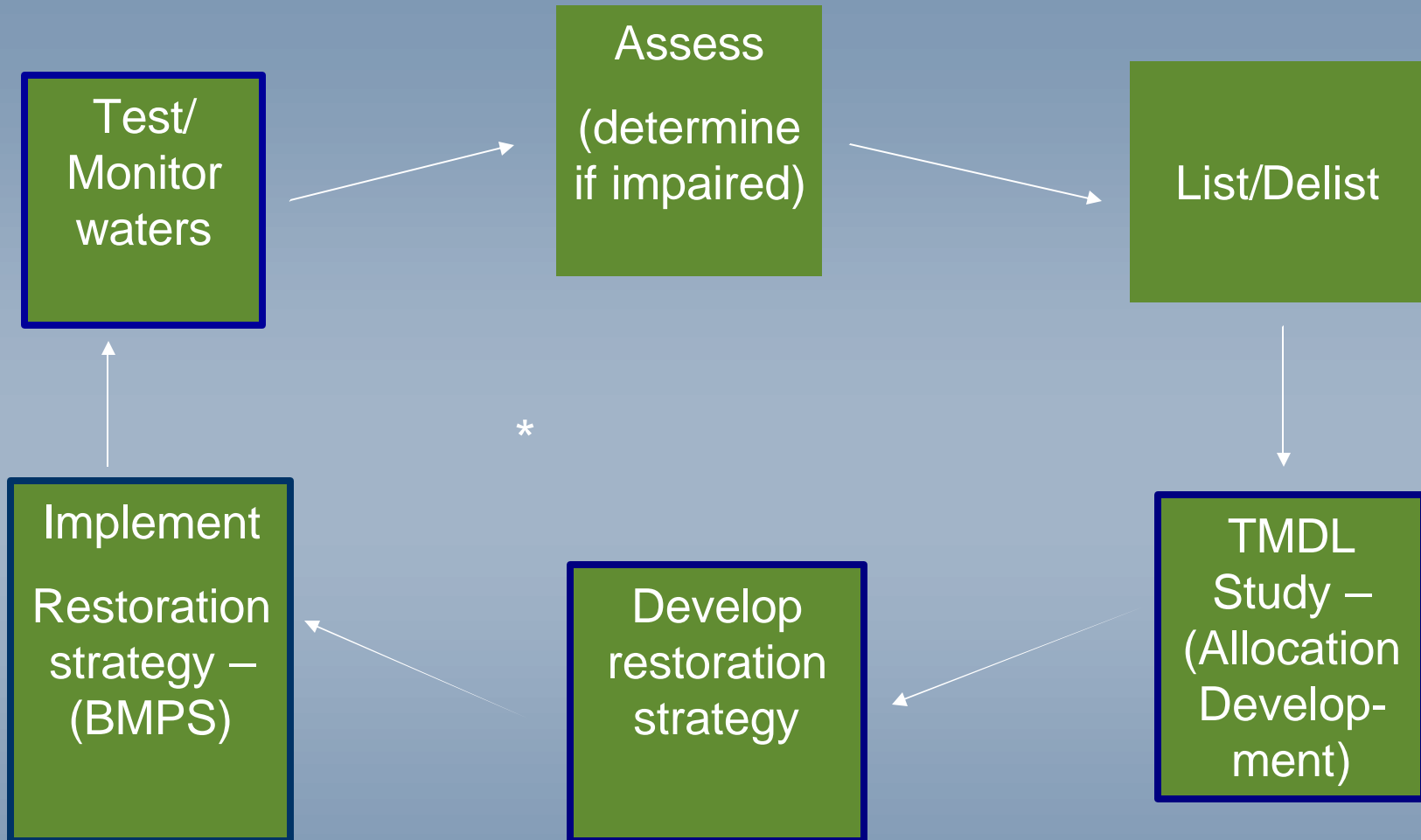


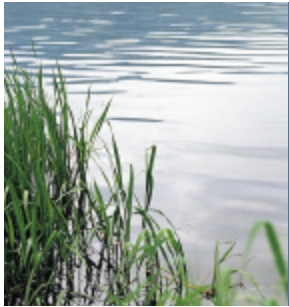
Standards not met?  
*Section 303 (d)* requires placing the water body on the *Impaired Waters List*



# TMDLs – The Process

Minnesota Pollution Control Agency





# Total Maximum Daily Load is...

the maximum amount  
of a specific  
pollutant that can be  
discharged to a  
waterbody and still  
meet water quality  
standards





# TMDL Pollutant Load Allocation Formula

A TMDL Study must complete this formula:

$$\text{TMDL} = \text{LA(s)} + \text{WLA(s)} + \text{MoS} + \text{RC}$$

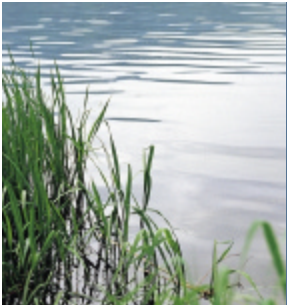
Where:

LA(s) = Load allocations from nonpoint sources

WLA(s) = Waste load allocations from point sources

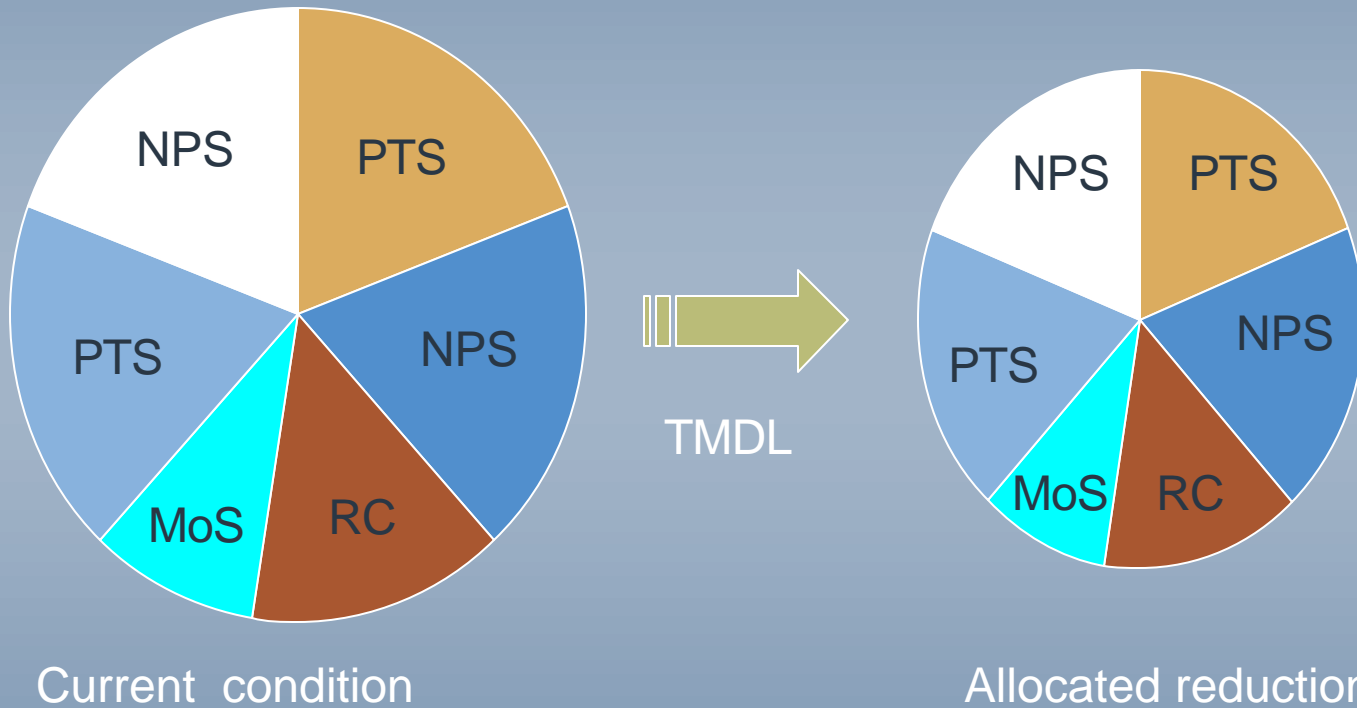
Margin of Safety = to account for potential scientific error

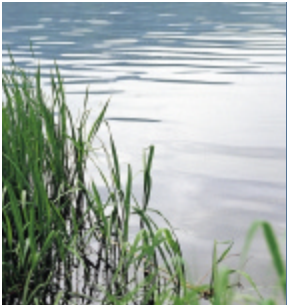
Reserve capacity = set aside for future development



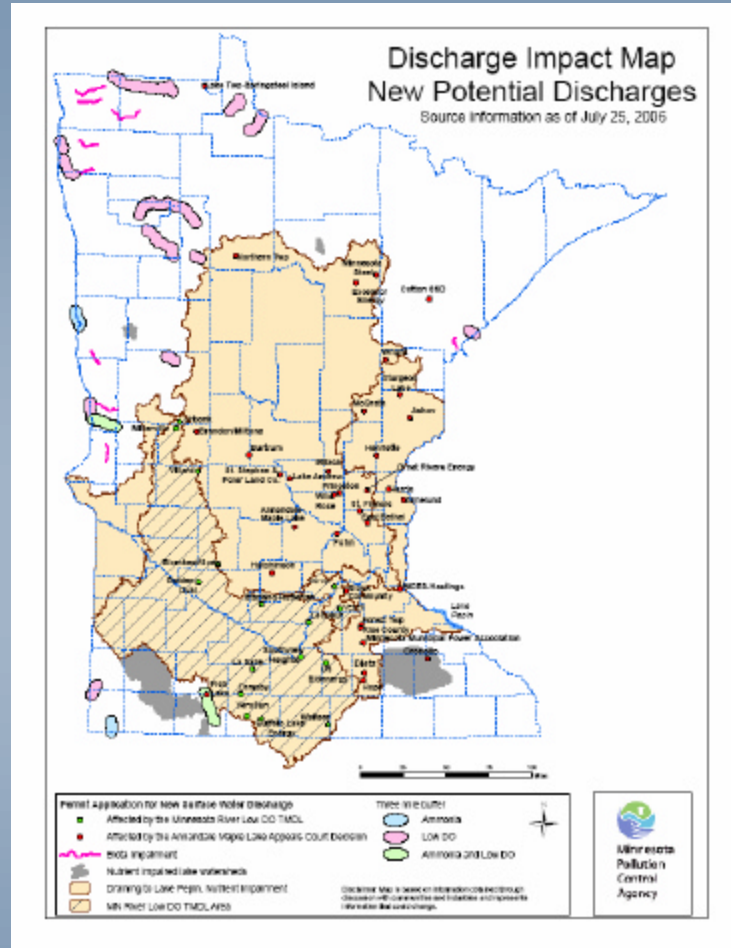
# Must Allocate Pollutant Loads Among All Sources

Minnesota Pollution Control Agency





# Annandale-Maple Lake Decision

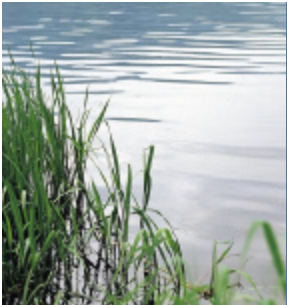


# Clean Water Legacy Act (CWLA)

To protect, restore, and preserve the quality of Minnesota's surface waters by providing authority, direction and resources to achieve and maintain water quality standards for surface waters as required by section 303(d) of the federal Clean Water Act

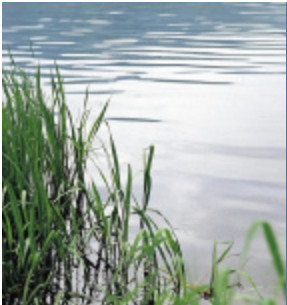
Chapter 114D





# FY 2007 - CWLA Funding Monitoring & Assessment

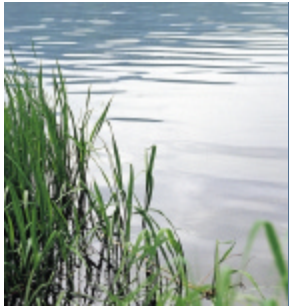
- \$2.140 Million
  - Expands lake and stream monitoring through:
    - Remote sensing
    - Citizen Monitoring
    - Chemical, physical and biological monitoring at the watershed level
    - Flow monitoring
    - Fish tissue monitoring



# FY 2007 CWLA Funding – TMDL Studies

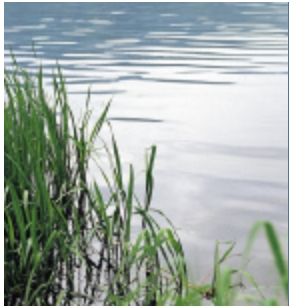
\$3.17 M will fund:

- 10 additional TMDL studies:
  - Lake Pepin
  - Redwood River
  - Root River
  - Sauk Lake
  - Red River
  - Poplar River
  - Clearwater River
  - Lake Peltier
  - Cottonwood River
  - Shingle Creek
  
- And Staffing to support TMDL studies.



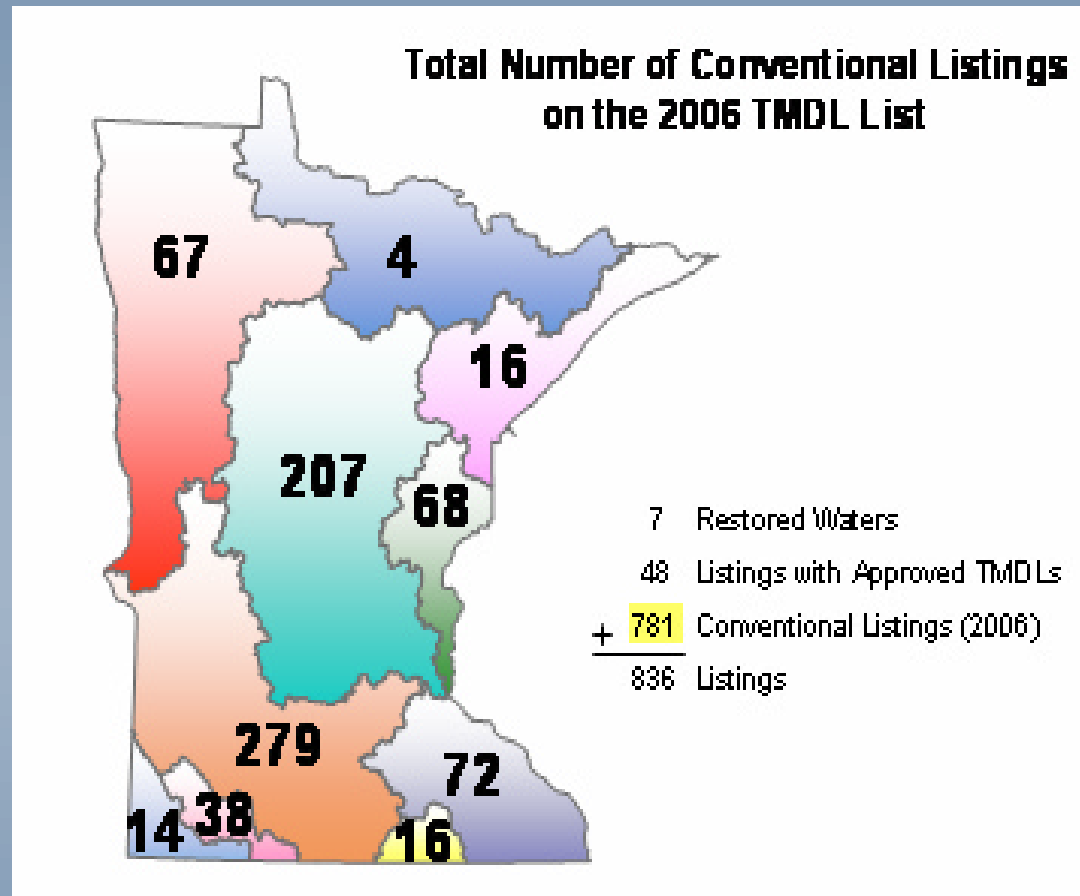
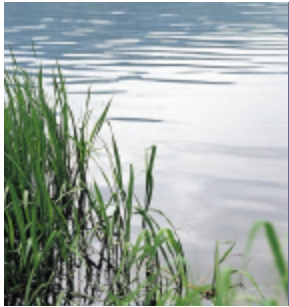
# FY 2007 – CWLA Funding NPS Restoration and Protection

- \$11.23 Million
- Joint Agency request for proposal
- Multi-agency evaluation of proposals
- 181 proposals for \$44 million
  - 50 restoration & 131 protection
- 51 projects funded \$8.0 million
  - 31 restoration & 20 protection



# FY 2007 CWLA Funding Point Source Restoration

- \$8.410 million
- Both protection and restoration
- PFA
  - Small community septic loans
  - Small community septic technical assistance
  - 75% grants for phosphorus treatment infrastructure
  - TMDL grant program





**Gaylen Reetz, MPCA**

**651-296-8856**